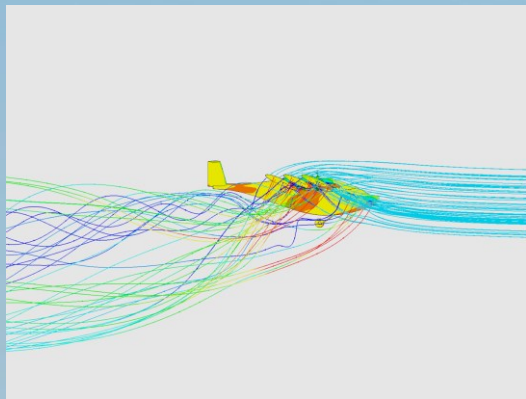


A NASA research aircraft, a high-wing, multi-engine plane with a white fuselage and red wings, is flying in the center of the frame. The background features rolling hills with sparse vegetation, including trees and grass, under a warm, golden light from a low sun. The overall scene is a landscape of rolling hills and trees, with the aircraft flying in the center. The text "NASA research and new aircraft" is overlaid in white, sans-serif font.

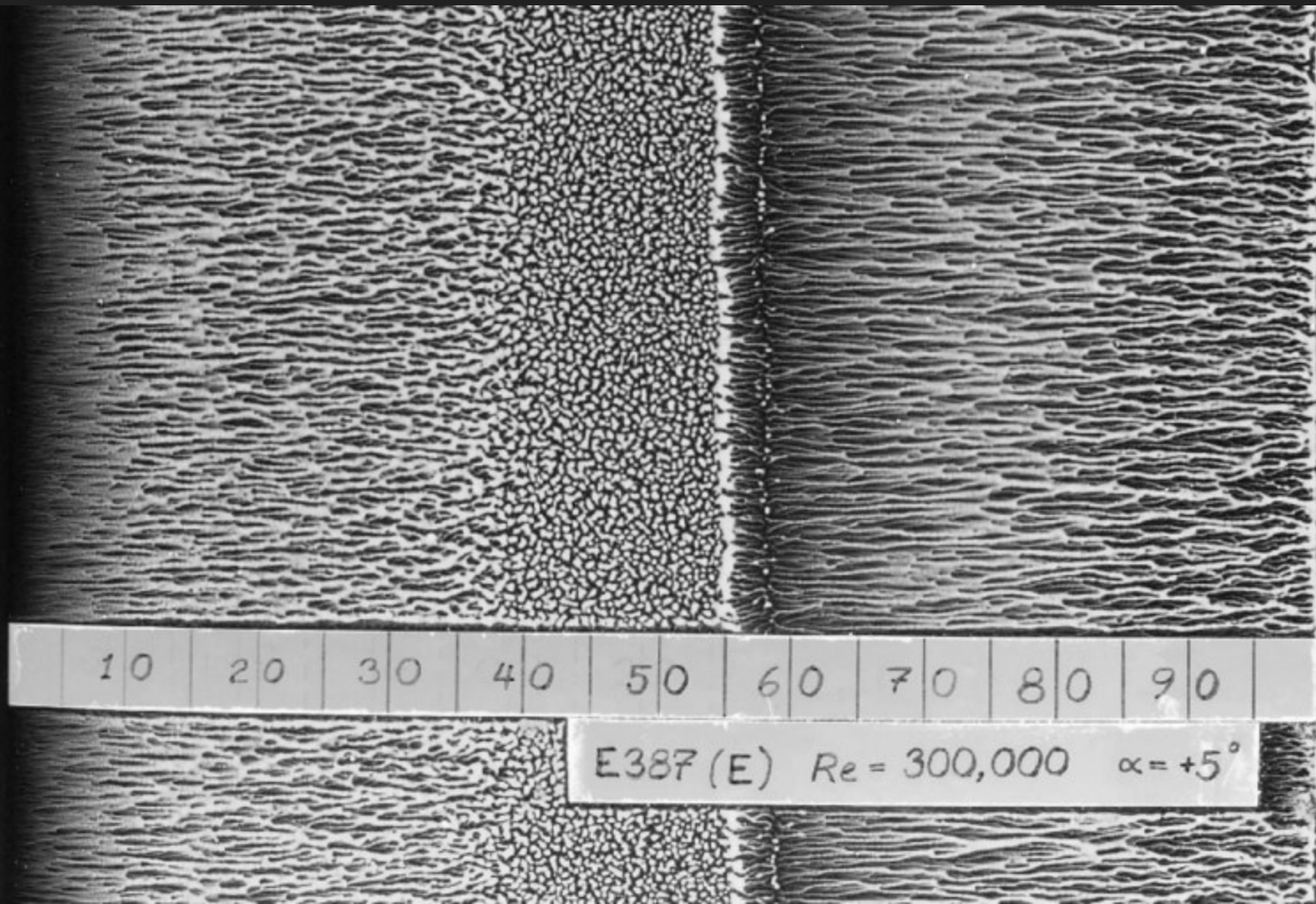
# NASA research and new aircraft











10

20

30

40

50

60

70

80

90

E387 (E)  $Re = 300,000$   $\alpha = +5^\circ$







---

## Effects of Wing Sweep on In-Flight Boundary-Layer Transition for a Laminar Flow Wing at Mach Numbers From 0.60 to 0.79

---

Bianca Trujillo Anderson and Robert R. Meyer, Jr.

---

July 1990

**NASA**  
National Aeronautics and  
Space Administration

### **FEDD**

#### **FOR EARLY DOMESTIC DISSEMINATION**

Because of its significant early commercial potential, this information, which has been developed under a U.S. Government program, is being disseminated within the United States in advance of general publication. This information may be duplicated and used by the recipient with the express limitation that it not be published. Release of this information to other domestic parties by the recipient shall be made subject to these limitations. Foreign release may be made only with prior NASA approval and appropriate export licenses. This legend shall be marked on any reproduction of this information in whole or in part. Date for general release July 31, 1991

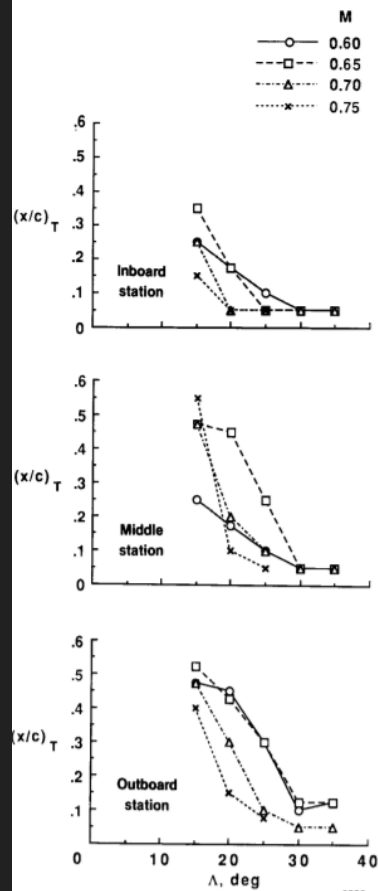


Figure 14. Maximum transition location as a function of sweep,  $h_p = 10,000$  ft.

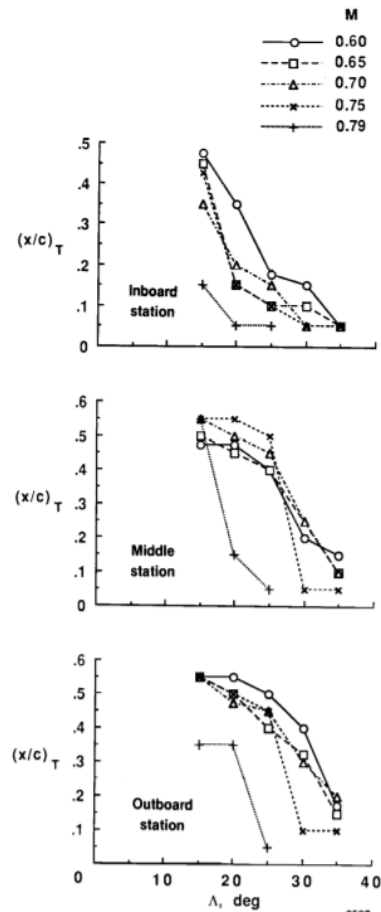
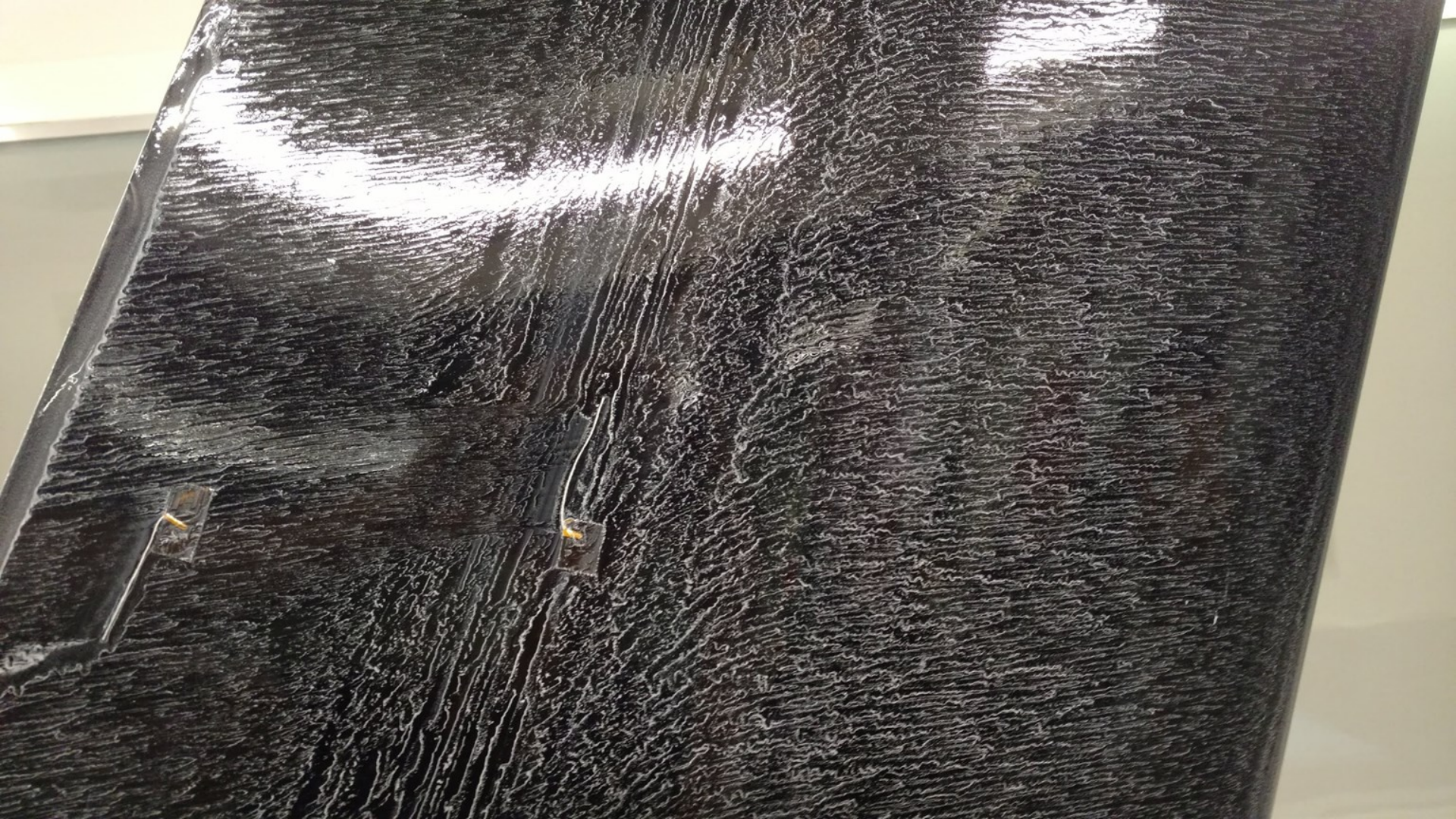
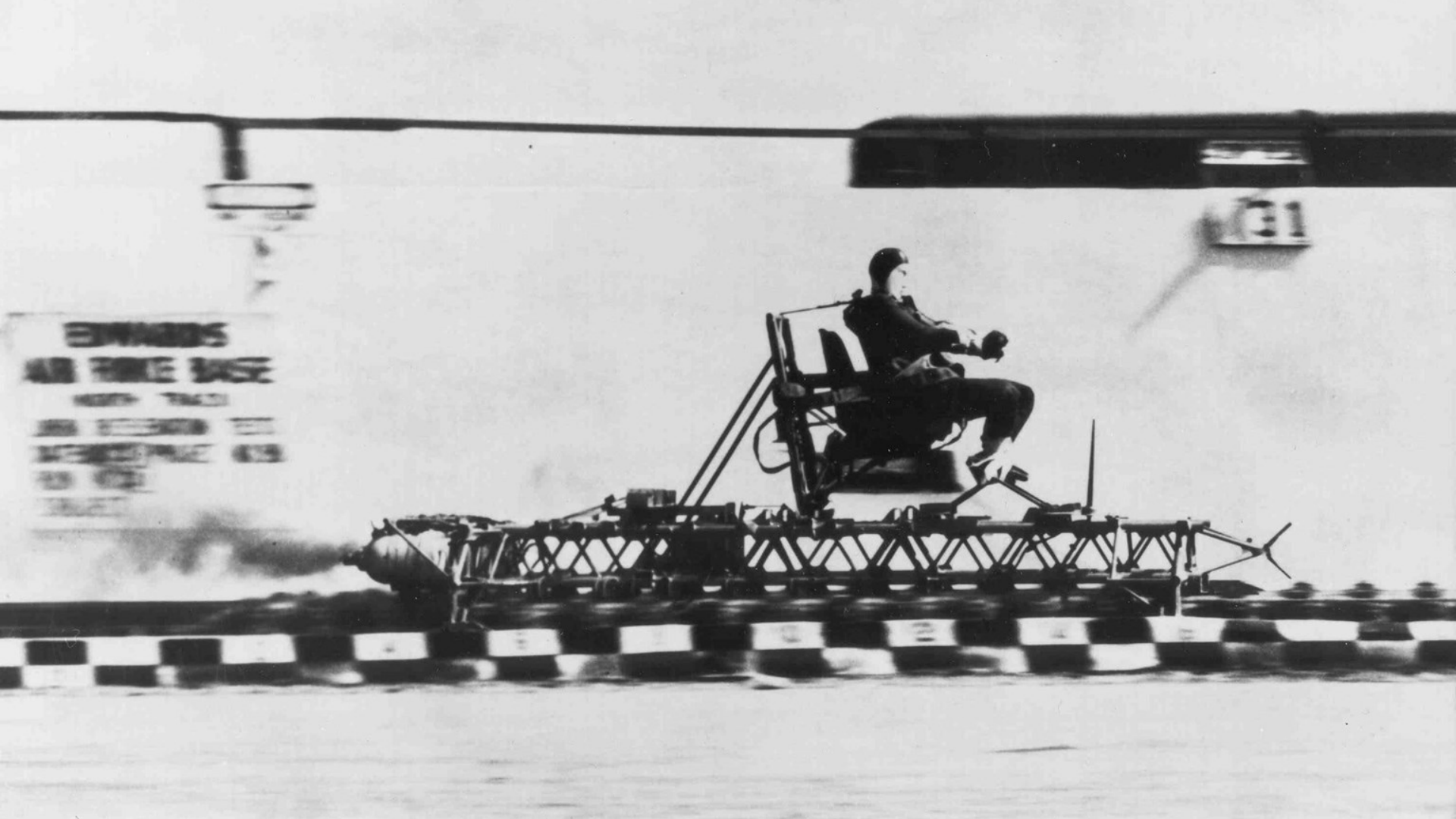


Figure 15. Maximum transition location as a function of sweep,  $h_p = 20,000$  ft.









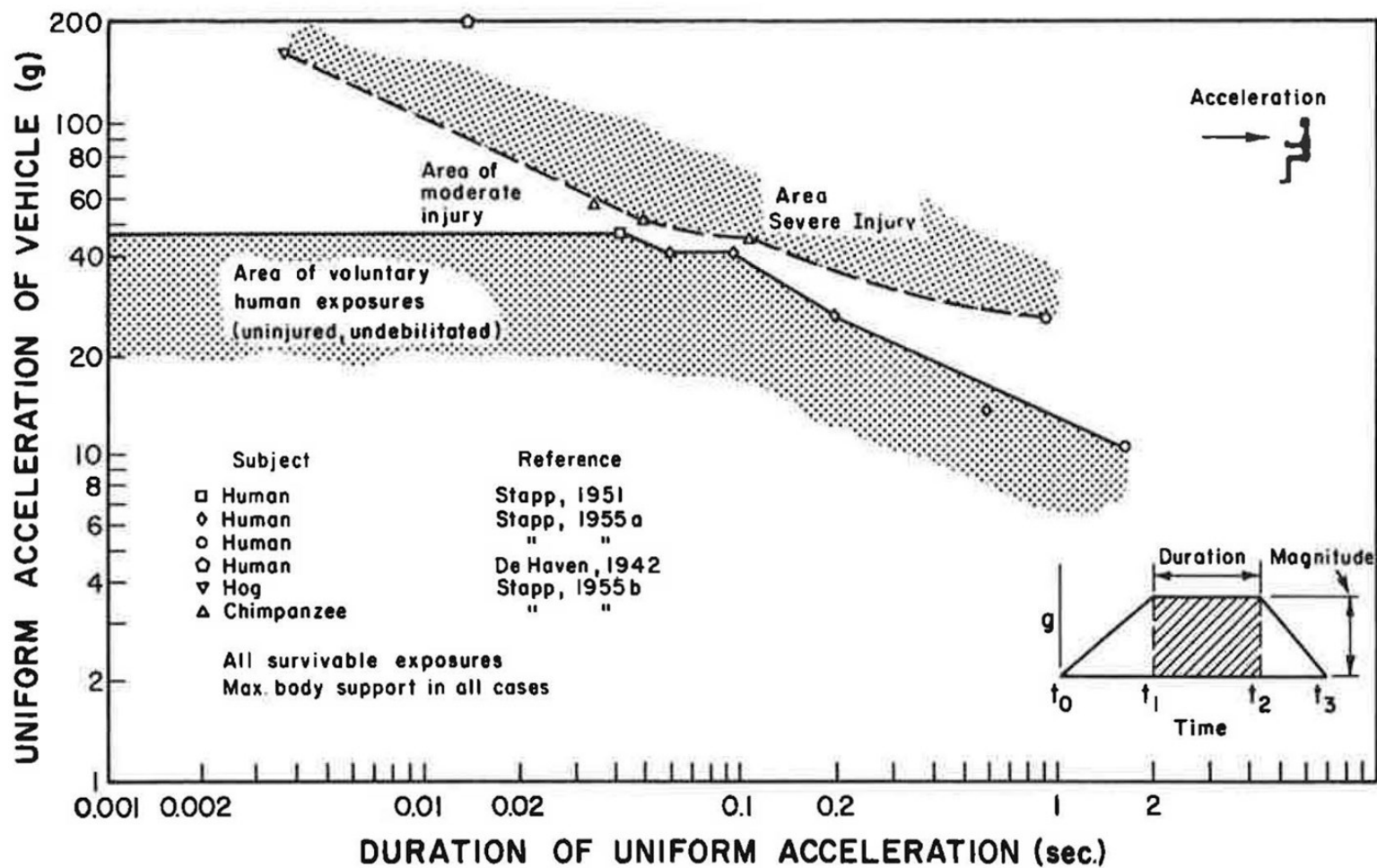
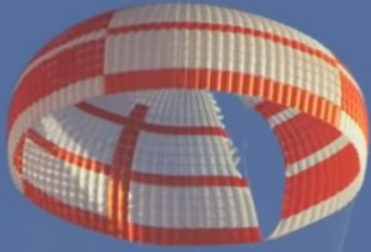


Figure 23.





64843-lbf



